





AERIAL SHOT OF FACTORY



ENERGY SAVING FACILITY



VIRTUAL INSPECTION



FUNCTIONAL TEST

ABOUT US:

Established in 1958, IndoAsian is an Indian origin brand with a legacy of consumer trust. We are proud to be part of the Legrand Group. As industry pioneers, we were the first to produce 10kA breaking capacity MCBs and RCCBs in India, and continue to deliver high-quality products suited for every market. Designing more with less, and offering great value for money is at the heart of everything we do. We innovate so that our products make sense, without compromising on quality. We are ISO 45001:2018 certified in the field of Occupational Health and Safety. We measure success when every consumer who experiences our offering says "this makes sense".

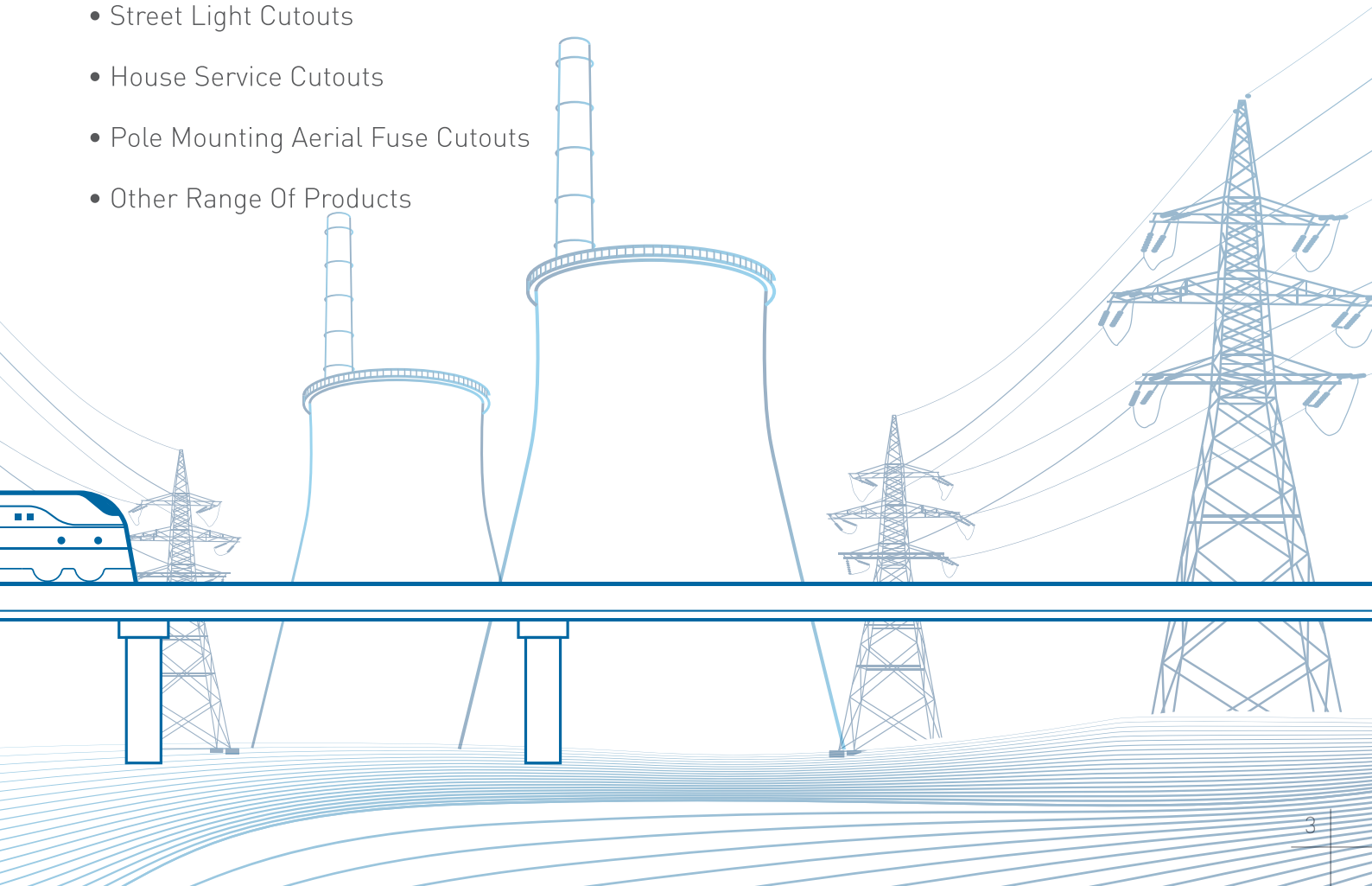


ASTA CERTIFICATE



CONTENTS

- Optipro SMDB
- Power Panel
- Lighting Panel
- Feeder Pillar
- Meter Panel
- Plug & Socket Panel
- Electrical Heat Tracing Panel (EHT)
- Portable Plug & Socket Boards (PPSB)
- LV Distribution Board (LVDB)
- Pre Wired DB
- Timer DB
- Smart Lite DB
- Busbar Chamber
- Fuse Cutouts
- Street Light Cutouts
- House Service Cutouts
- Pole Mounting Aerial Fuse Cutouts
- Other Range Of Products



Optipro SMDB



Features

The busbar assembly is fully covered behind the molded shrouds, providing high user safety.

Separate shield are provided on incomer & outgoing MCCB's that offers IP20 protection even after opening of main door. This also enhances the safety during maintenance work on incomer or outgoing circuit.

In Optipro SMDB, separate earth bar & Isolated neutral bars are provided on both sides, with required termination points to simplify the connections.

Removable gland plates (on top, bottom & both sides) are provided, eases the entry of cables & fitment of accessories.

Optipro SMDB is used for distributing of electrical power supplies of upto 630A.

It is equipped with over current protection device i.e MCCB, both as an incomer and multiple outgoing ways. The all-new range is certified as per IEC 61439 - 1 & 2 from NABL accredited laboratory.

Material

- CRCA sheet steel / 1.6 mm
- Degree of protection: IP43 in Double Door & IP30 in Single Door design

Mechanical Impact strength:

- IK09

Wide Range:

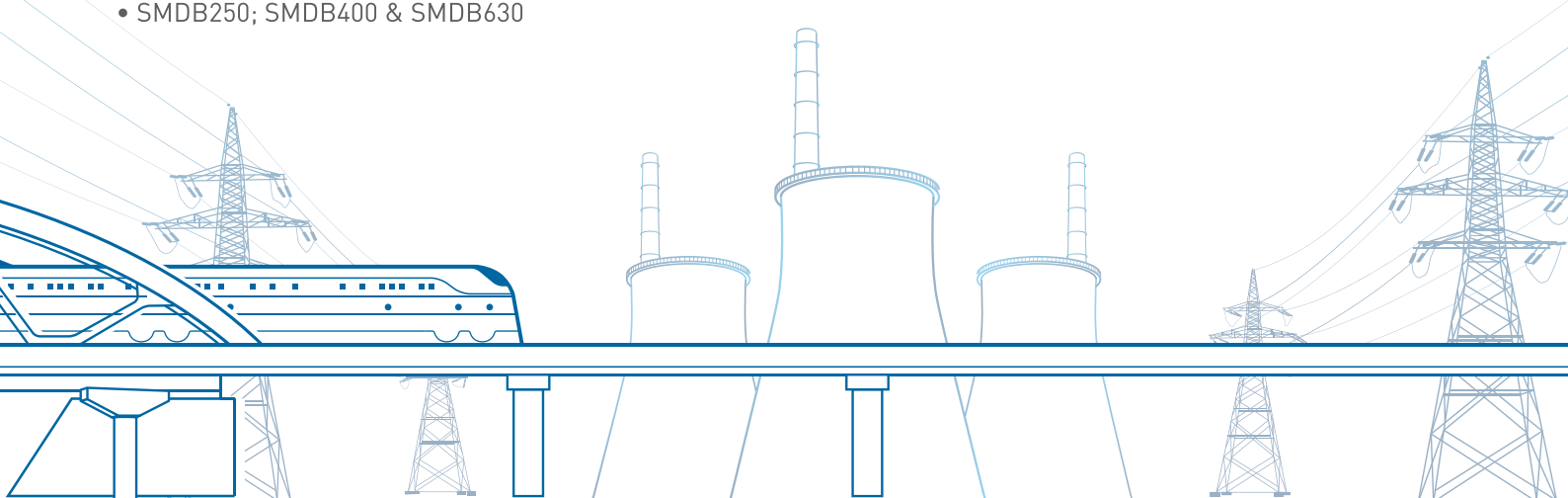
- 4W/6W/8W/12W

3 frame Sizes:

- SMDB250; SMDB400 & SMDB630

Applications

They are used in modern commercial buildings, public buildings, educational institutes, hospitals, manufacturing units & also to address the application requirement's such as energy management & metering.



Power Panel



Power Panel Used for power distribution & control to provide reliable and effective service. These panels are manufactured as per client's specifications and requirements which very well meet the industry demands.

Rated Current

- Up to 6300 A

Short Time Current

- 50 KA for 1 Sec

Degree of Protection

- Up to IP 55

Type Tested for

- Short Time Current
- Temperature Rise
- Degree of Protection

Bus Bar

- Aluminum or Copper

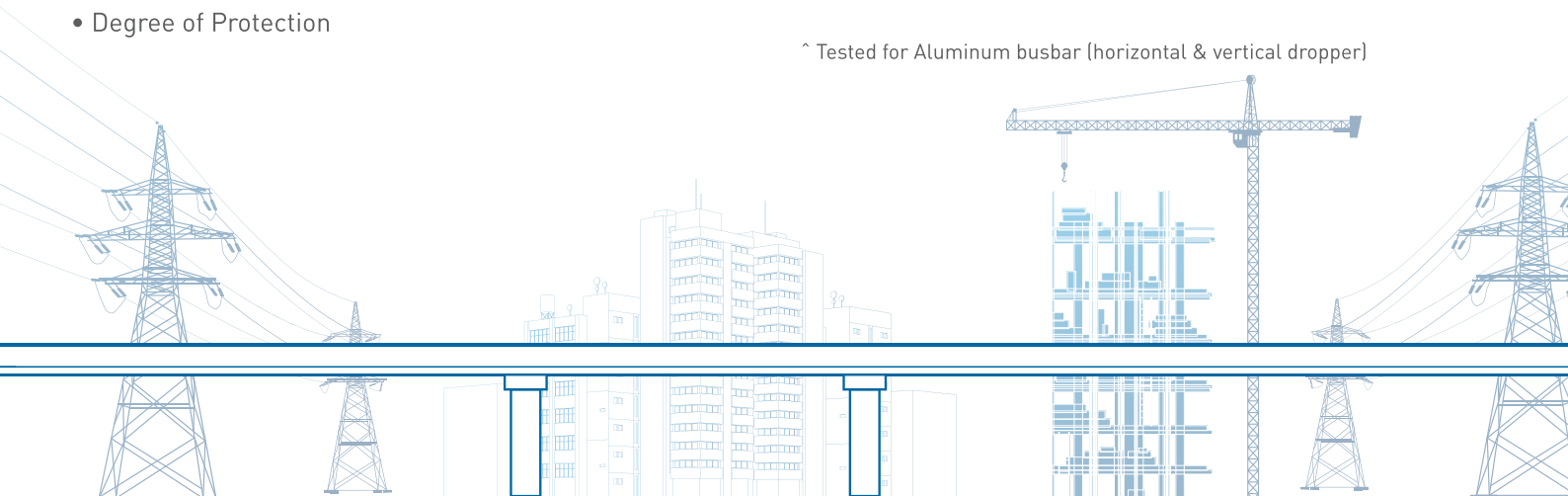
Enclosure Material

- CRCA/GP Sheet/ Aluminum Sheet

Application

Industries like Power, Steel, Refineries, Petro Chemical, Fertilizer, Oil & Gas plants and Commercial buildings

^ Tested for Aluminum busbar (horizontal & vertical dropper)



Lighting Panel



The range of lighting boards offers complete solution for controlling power for lighting loads manually or automatically.

Material

- CRCA / GP 1.6mm – 3mm

Protection Category

- IP42 to IP55
- 10kA for 1 Sec

Incomer

- MCB/SFU/MCCB

Features

Lighting boards are designed as per customer requirement to have complete controlling of power through push buttons, timers and photocell sensors. Detachable Base plate assembly enables them to be assembled or rectified easily.

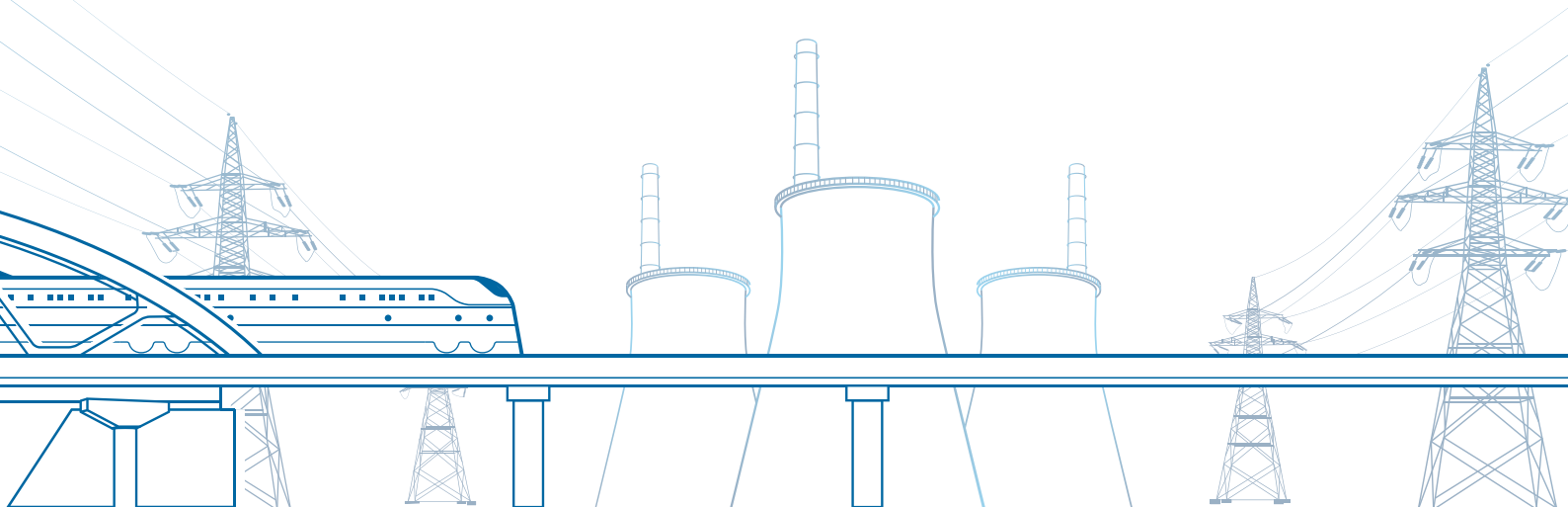
Termination of outgoing of MCB onto terminal blocks make them ready to install.

Compact busbar systems provide the option of increasing the rating, thereby increasing the no. of outgoing connections.

- Control of power through various arrangements such as push buttons, photo cell, timers etc.
- Pad locking arrangement for safety and sealing.
- Red-Green indicators for On-Off indication
- Selector switch availability for selection of controlling mode
- Detachable gland plates on Top & bottom for ease of cabling

Applications

Finds extensive use on construction site, industry, residential complex, substation lighting, power plant lighting & metro rail.



Feeder Pillar



Features:

- Tested as per IEC 61439 international standard
- Operating voltage – 415/440V, 3 phase, 4wire
- Current rating upto 2400A.
- Rated short circuit with stand strength - upto 46kA(1sec)
- All live exposed parts screened - greatly reduce the risk of electrical shock during service conditions.
- Available with wide range of accessories as per customer requirement as MDI, MFM, KWH, Voltmeters, Cable clamps & pad locking etc.

An extensive range of low voltage feeder pillars from the transformer to the end distribution, providing solutions from fuse protection to the latest circuit breaker technology. The assemblies purely custom built to meet customer specific needs. Feeder Pillar can be installed outdoors or indoors to protect and to safe distribution of electricity to residential and industrial customers.

Applications

Used by Utilities (Electricity Board) for power distribution in housing, commercial and industrial complex.

Material

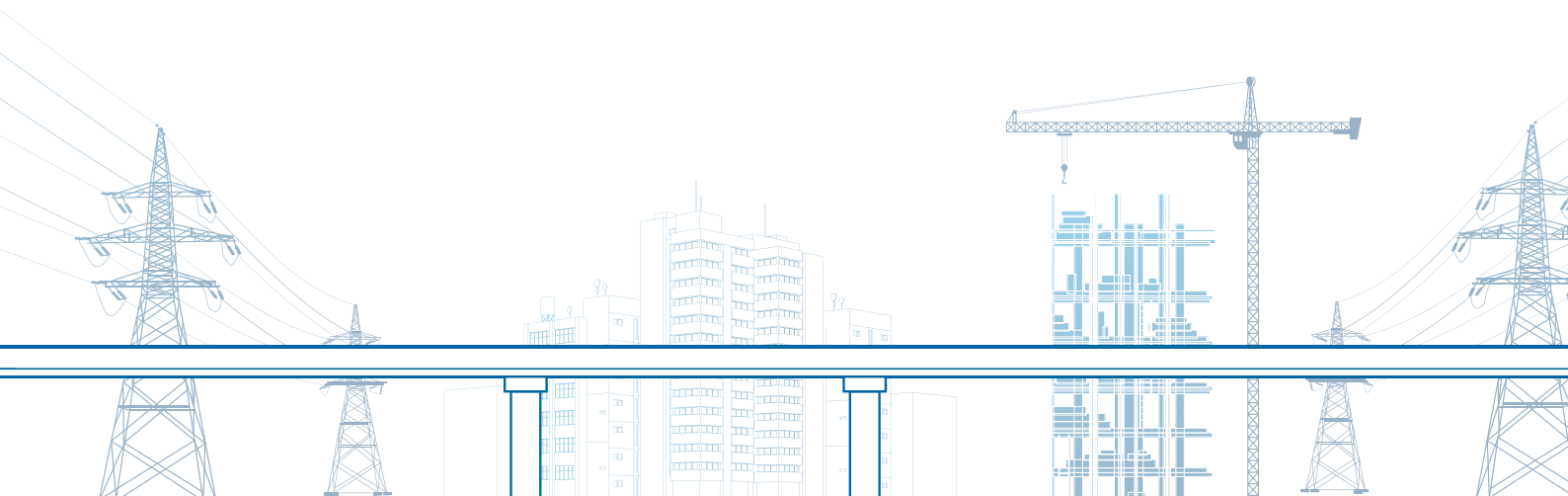
- CRCA/GP Sheet or Aluminium Sheet

Degree of protection

- Up to IP-55 to provide maximum protection in outdoor installation

Incomer

- Vertical Fuse switch (VFS)/ Vertical switch (isolator)/MCCB



Meter Panel



Meter panels are used to bring all the energy meters at a common point for ease of distribution, data analysis and safety reasons.

Material

- CRCA 1.6mm – 2mm

Protection Category

- IP42 to IP55

Incomer

- As per requirement

Outgoing

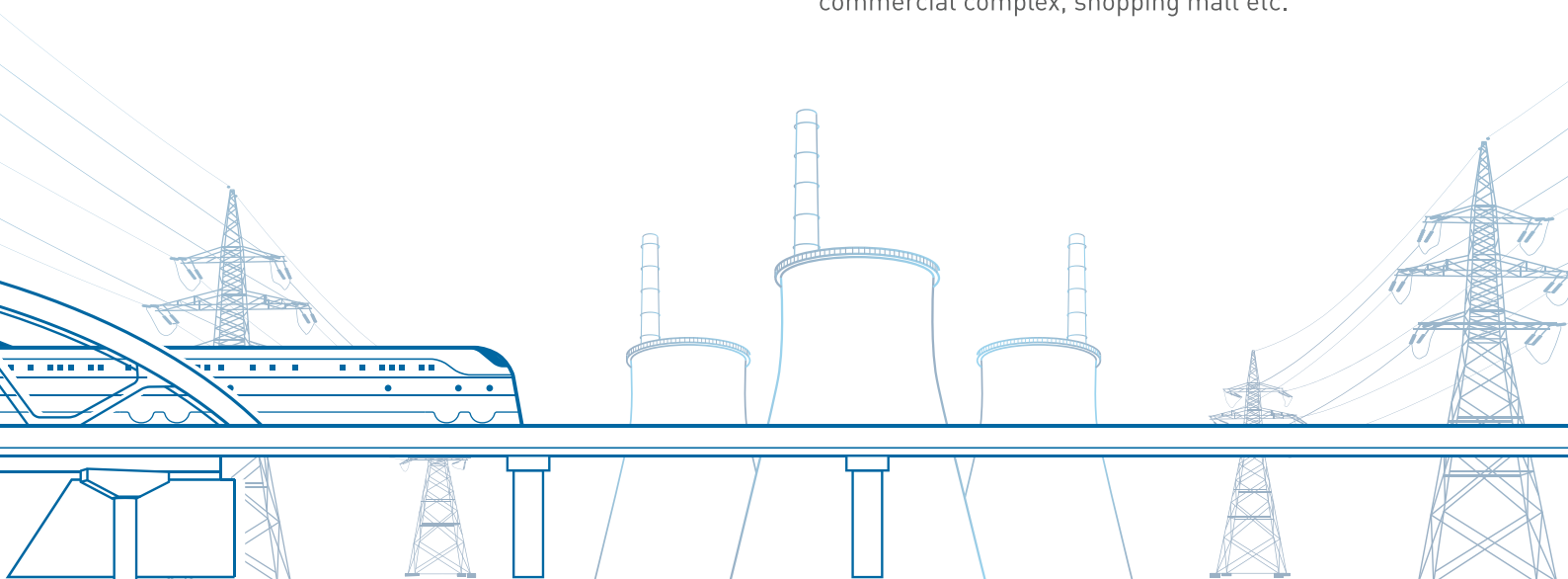
- Energy meters with MCB rating from 10A to 63A

Features

- Meter boards consist of a compact busbar system controlled by three phase incomer MCB.
- Outgoing connections are taken through MCB with separate energy meter for each connection.
- Separate pad locking of each metering compartment
- Termination of outgoing connections onto terminal strips makes them ready to install
- Acrylic meter windows for data reading in pad locked position

Applications

Meter panels are used in housing complex, commercial complex, shopping mall etc.



Plug & Socket Panel



The Plug & Socket panels are built purposely to plug in distribution assemblies supplied to refineries, manufacturing industry, petrol pump, lighting load etc. The panel is supplied with fully wired & tested, therefore enabling quick and efficient installation

Material

- CRCA 1.2mm - 2mm

Protection Category

- Upto IP55

Incomer

- As per requirement

Outgoing

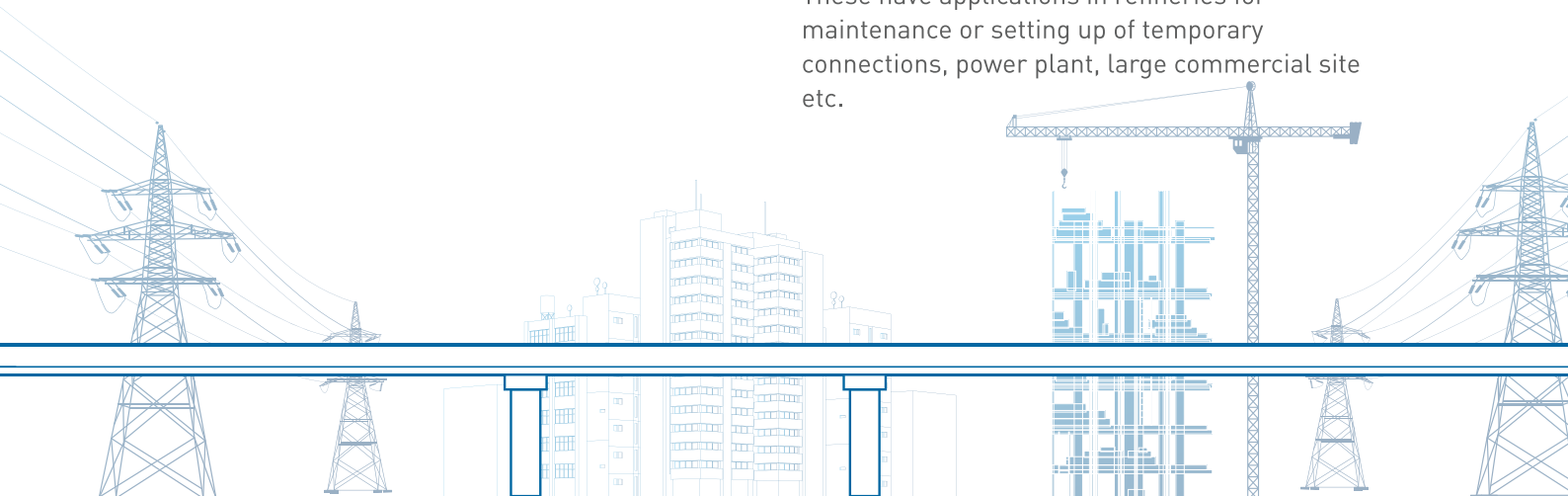
- **Sockets:** SP & TP (Metal Clad/Insulated)
- **Rating:** 16A, 20A, 32A, 63A, 100A

Features

- Plug & Socket Panel comes with fitted three/five pin sockets, individually protected from over currents and short circuits by the use of MCB at outgoing circuits.
- Individually protected sockets for overall protection of the system.
- Both SP & TP sockets for Single & Three phase supply respectively.
- Availability of base frames for outdoor applications for foundation mounting location.

Applications

These have applications in refineries for maintenance or setting up of temporary connections, power plant, large commercial site etc.



Electrical Heat Tracing Panel (EHT)



Electrical heat tracing panels are specially designed to provide the complete power distribution and control for an electrical heat tracing system by means of automation circuits and temperature controllers. Indo Asian provide the customer/site specific EHT Panel purely designed on customer specifications having features such as:

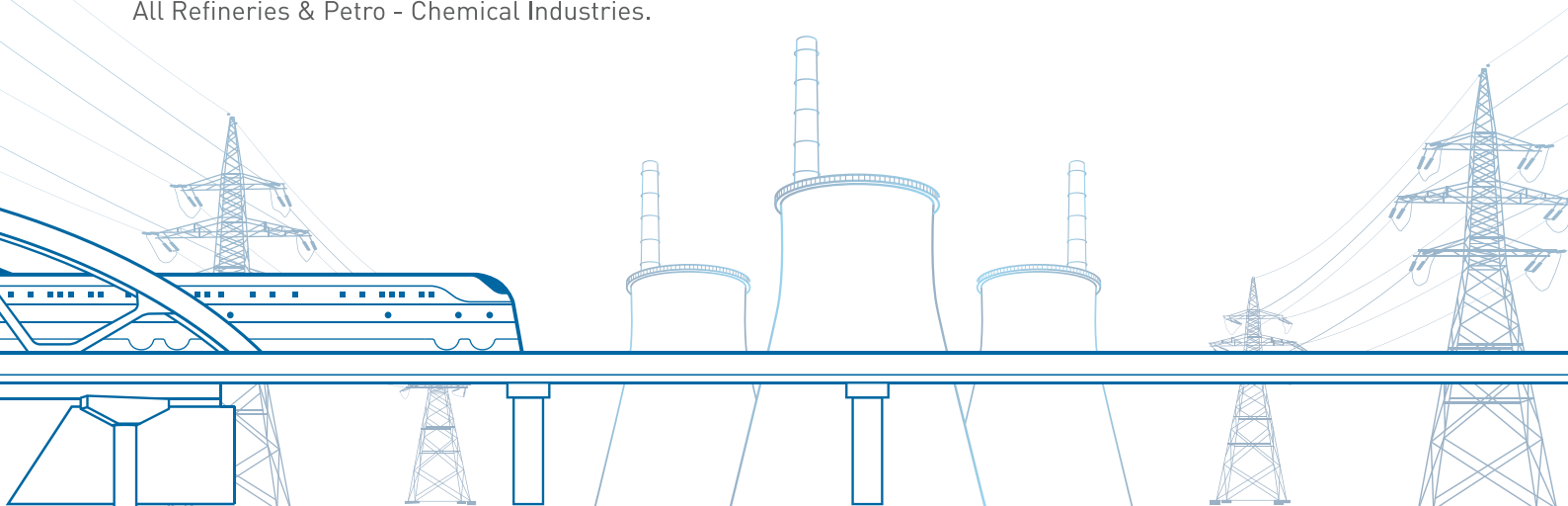
- With or without temperature controllers.
- With or without RTD sensors.
- Manual or HMI control for operation of feeders.

System

- 240/415/440V, 1Ph./3ph.
- Max current rating as 630A/800A.
- High Degree of protection as IP-55 to cater outdoor installation.

Application

All Refineries & Petro - Chemical Industries.



Portable Plug & Socket Boards (PPSB)



The Plug & Socket panels are built purposely to plug in distribution assemblies supplied to **construction site** refineries, manufacturing industry, petrol pump, lighting load etc. The panel is supplied with fully wired & tested, therefore enabling quick and efficient installation.

Material

- CRCA 1.2mm – 2mm

Protection Category

- Upto IP55

Incomer

- As per requirement

Outgoing

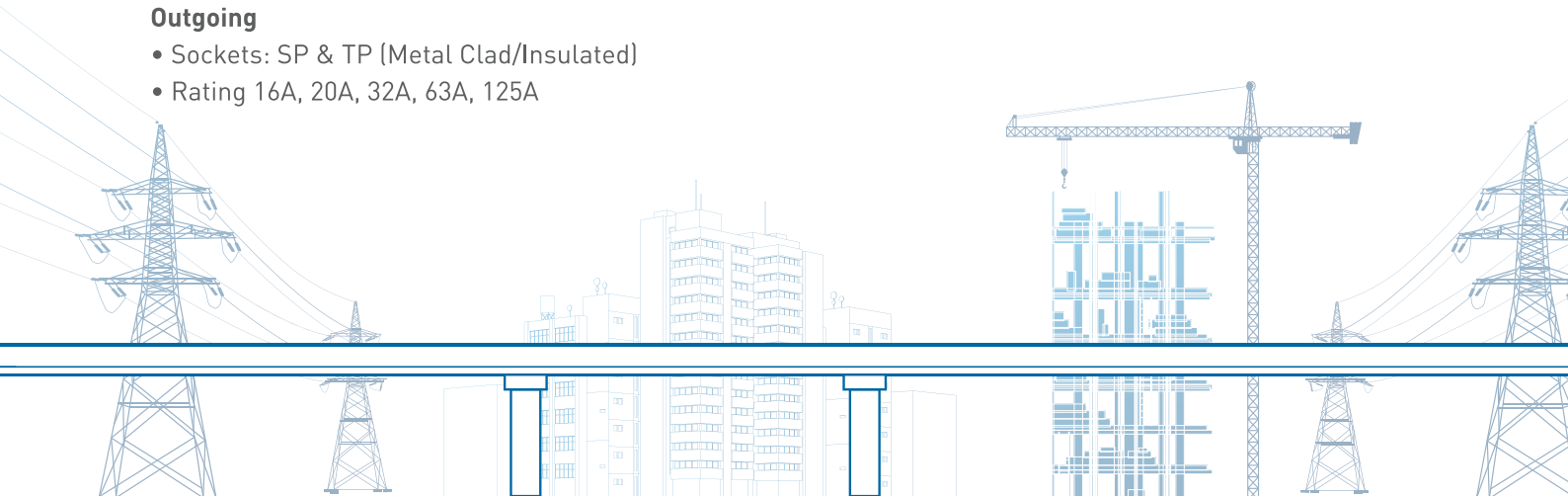
- Sockets: SP & TP (Metal Clad/Insulated)
- Rating 16A, 20A, 32A, 63A, 125A

Features

- Plug & Socket Panel comes with fitted three/five pin sockets, individually protected from over currents and shorts circuits by the use of MCB at outgoing circuits.
- Availability of base frames for outdoor applications for foundation mounting location.
- Suitable for single phase & three phase connection
- Metering & indication lamp

Applications

These have applications in refineries for maintenance or setting up of temporary connections, power plant, large commercial site etc.



LV Distribution Board (LVDB)



Single & Three phase pole mounted DB fitted with Copper/Aluminium busbars for outgoing connections, in conjunction with MCCB as main protection device and installed energy meters for data measurement & analysis.

Material

- CRCA 1.2mm – 3mm

Protection Category

- Upto IP55

Incomer

- As per requirement

Outgoing

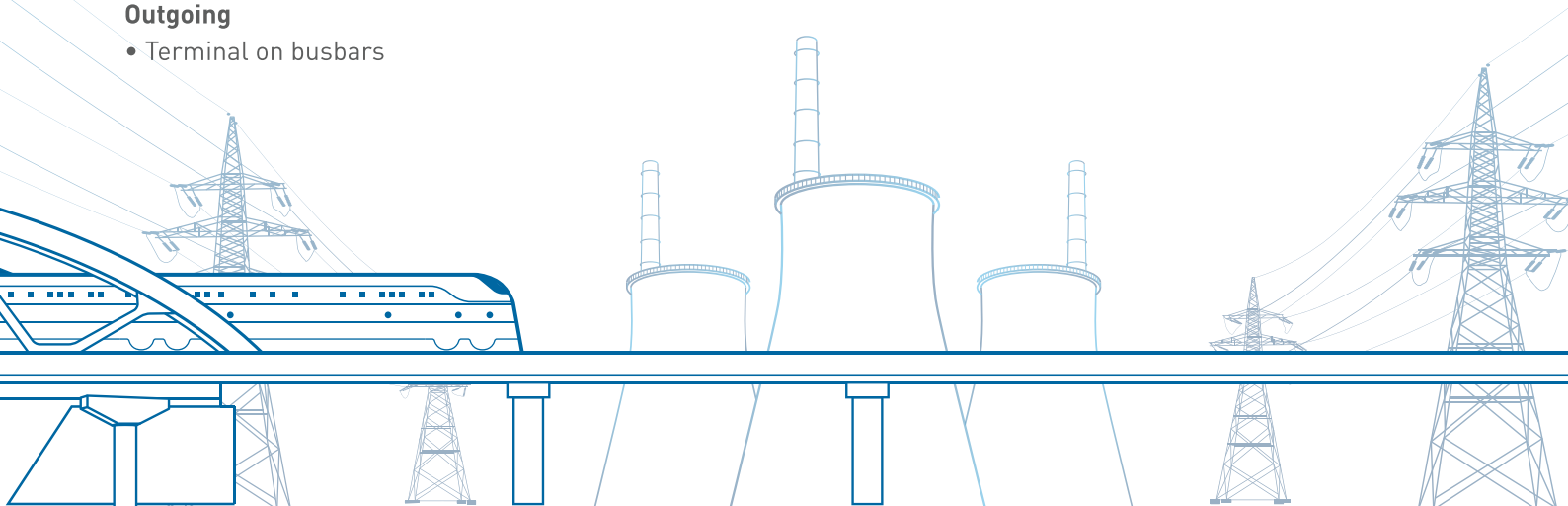
- Terminal on busbars

Features

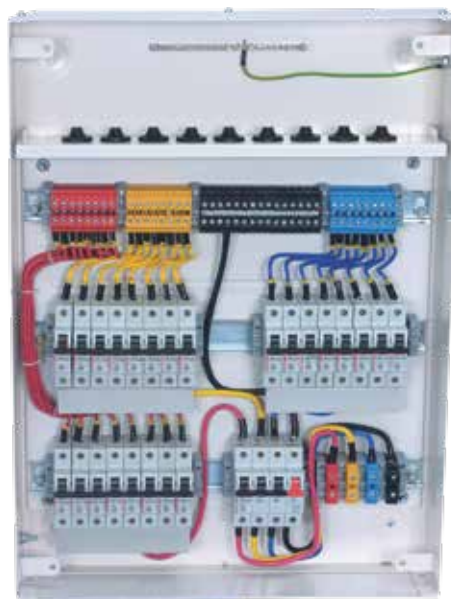
- MCCB to ensure circuit protection from overload & short circuit.
- Available with Direct / CT operated energy meters.
- Pad locking arrangement to lock / seal DB.
- Availability of models that can be directly mounted on transformer bushings.

Applications

Used for distribution of power in urban/rural areas with installed energy meters to keep a check of power theft and data analysis for power management.



Pre Wired DB



Pre wired DB is fully wired & tested DB, enabling quick and efficient installation in residential complex, office, shopping mall etc.

Material

- CRCA 1.6mm - 2mm
- Powder Coating Shade: RAL 7032 / 7035, Jay White

Protection Category

- IP20 to IP42

Incomer

- DP/FP MCB or Isolator from 32A to 125A

Outgoing

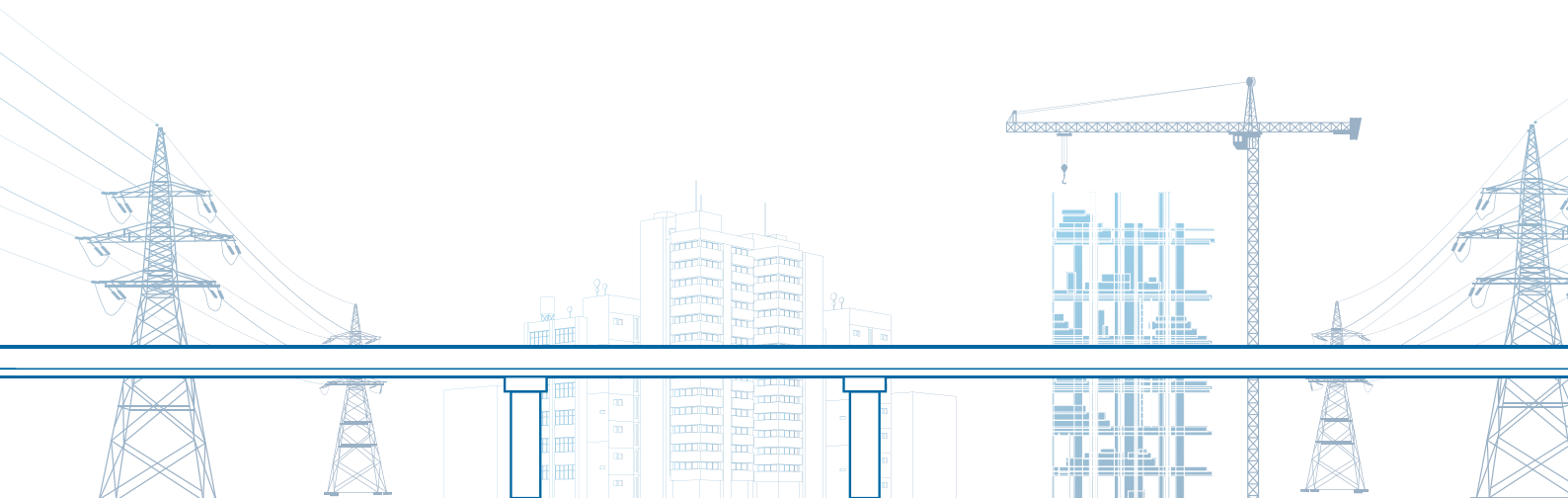
- SP MCB 6A, 10A, 16A, 20A, 32A
- No. of ways: 4/6/8/12/14/16
- Type: SPN/TPN

Features

- Pre wired DB are fully wired from start to end at terminal blocks for outgoing connections. Each outgoing circuit is separately protected from overload current & short circuit by MCB, indicating lamp provided for live circuit indication.

Applications

Pre wired DB find extensive use in shopping mall, housing complex, office, DG MAP, Housing complex etc.



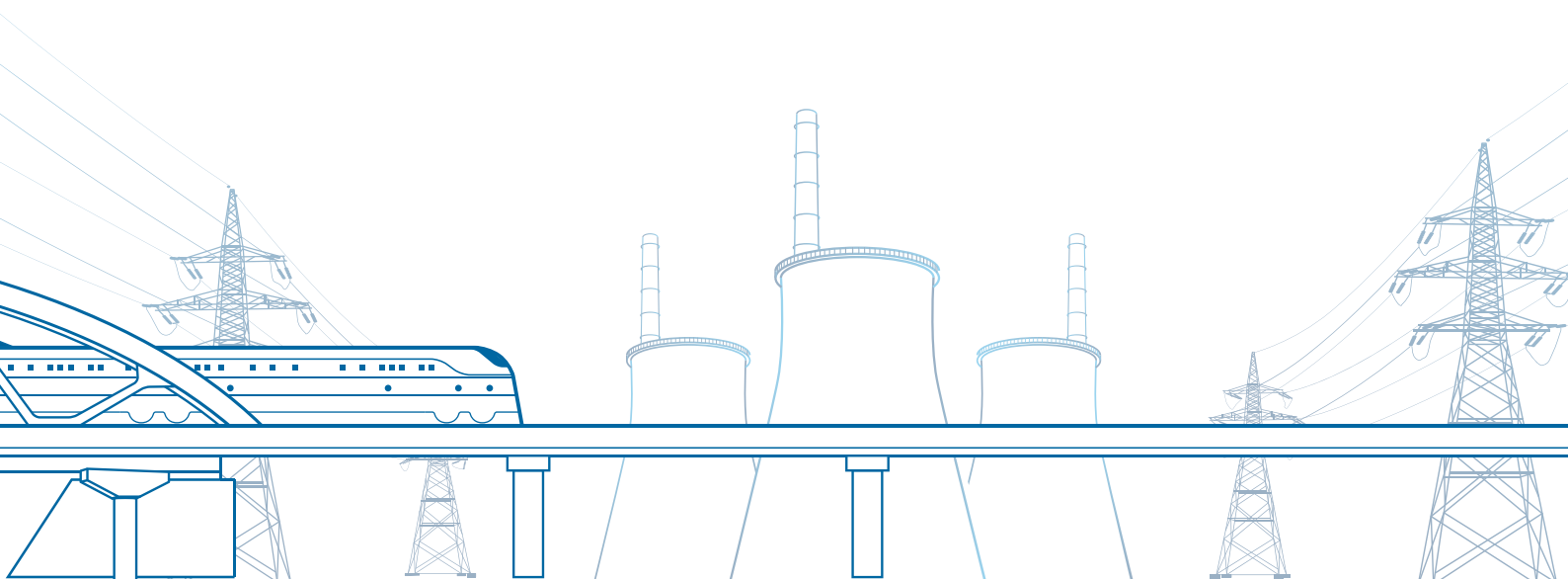
Timer DB



Electricity is exponentially taking over our life style. Its consumption in our life has gone up many folds. Its usage has gone up neck pace in various applications like domestic and industrial. This has forced us to utilize electrical energy in a safe and efficient way, so that it continues to play a pivotal role in our life. This requires a design/solution which can protect from overload and short circuit in addition to saving energy in every possible way. Timer DB are prefabricated and engineered solution protection to save energy for lighting applications.

Features

- Aesthetically appealing with locking facility
- IP54 degree of protection
- Switch On-Off street lights on time scheduling basis by incorporating an analog/digital time switch and contactor.
- Rating of contactor depends on the luminaires and wattage of lighting loads.
- Range includes from 16A to 110A with analog/digital time switch. Model incorporating energy meter is also available on request.



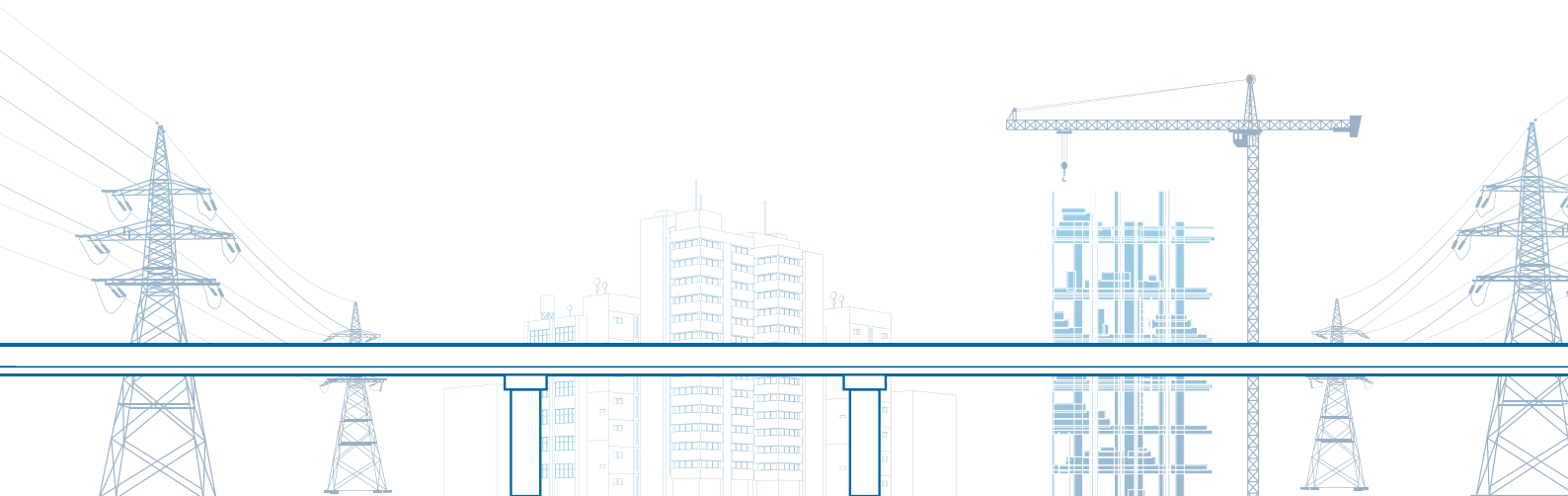
Smart lite DB



Electricity is exponentially taking over our life style. Its consumption in our life has gone up many folds. Its usage has gone up neck pace in various applications like domestic and industrial. This has forced us to utilize electrical energy in a safe and efficient way, so that it continues to play a pivotal role in our life. This requires a design/solution which can protect from overload and short circuit in addition to saving energy in every possible way. Timer DB are prefabricated and engineered solution protection to save energy for lighting applications.

Features

- Aesthetically appealing with locking facility
- IP54 degree of protection
- Switch On-Off street lights on time scheduling basis by incorporating an analog/digital time switch and contactor.
- Rating of contactor depends on the luminaires and wattage of lighting loads.
- Range includes from 16A to 110A with analog/digital time switch. Model incorporating energy meter is also available on request.



Busbar Chamber



Busbar chamber offers ultimate solution in taking number of outgoing connections from single incoming source.

Material

- CRCA/GP

Protection Category

- Upto IP55

Incomer

- Termination on busbars
- Rating 100A to 630A

Outgoing

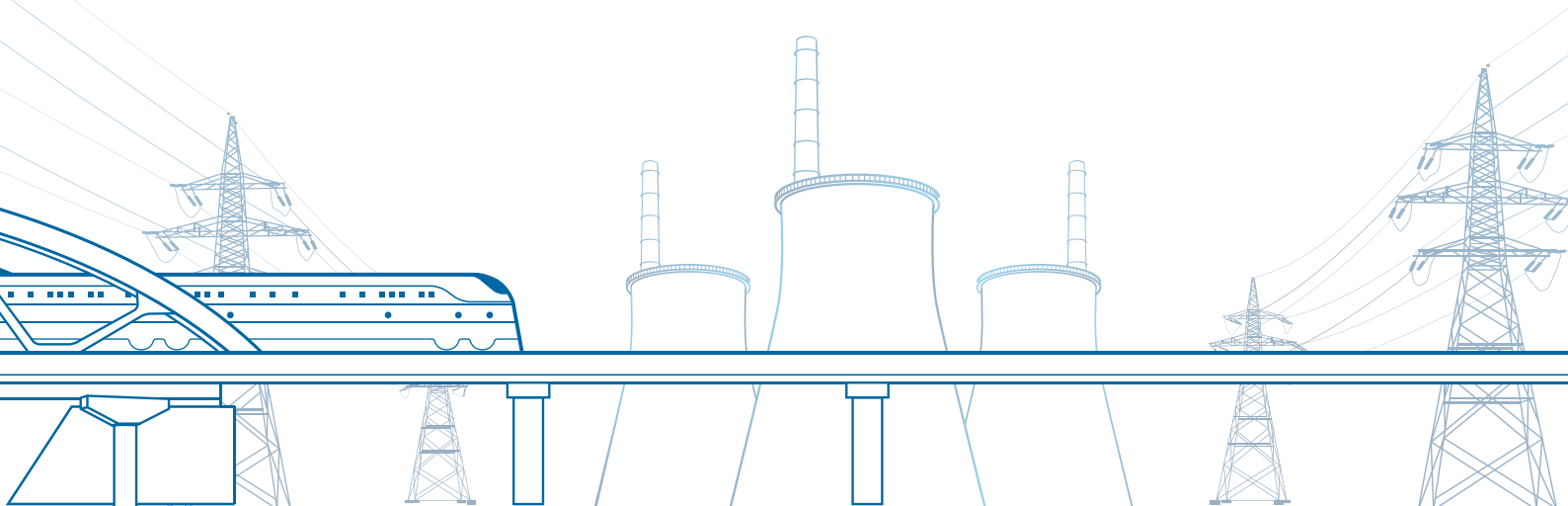
- Termination on busbars
- Type: SPN/TPN

Features

- The Busbar chamber is available in step type design arrangement system equipped with copper/aluminum busbars duly fitted with cable lugs of suitable size as per customer requirement, pre assembled lugs for easy termination of cables
- Adequate space for cable termination directly on busbars.
- Pad locking arrangement to lock/seal DB, availability of wall/pole mounting with clamps of suitable size arrangement.

Applications

Used extensively in industry, housing complex, street lighting junction, shopping mall, utilities etc.



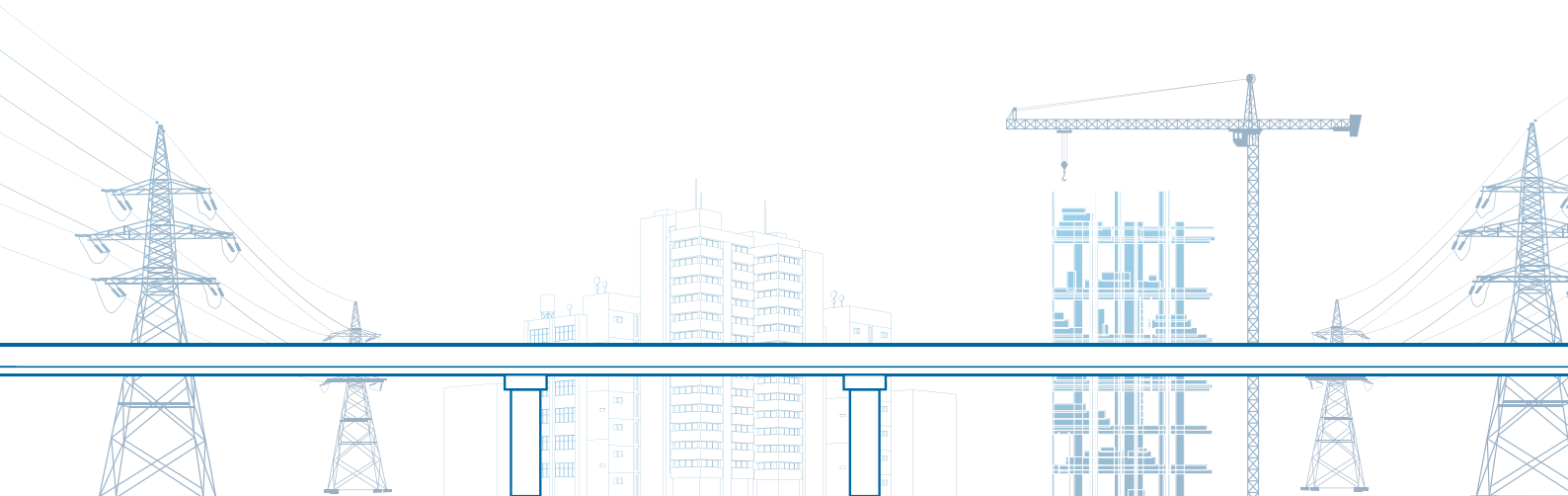


Fuse cutout

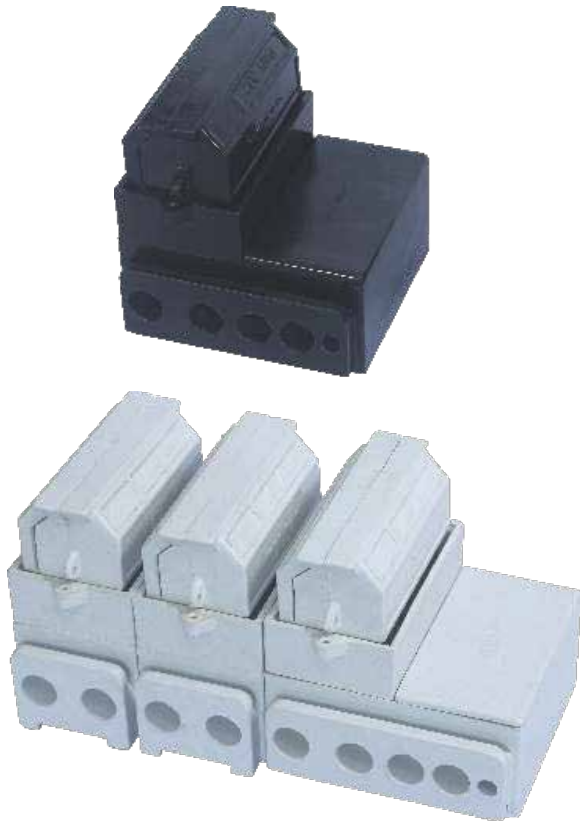
- IndoAsian brings the standard for safety and convenience in a power distribution system.
- Introducing, Street Light Cutout, House Service Cutout & Pole mounting aerial fuse cutout.
- Provide backup protection to the distribution system and are used in domestic and industrial electric circuit protection with Distribution Board.
- Lighting columns provide reliable street lighting and hence improve road safety.

Street Light Cutouts

- Manufactured out of CRCA / GP Sheet Steel, Powder Coated for aesthetically superior finish, thickness: Base - 3mm, cover and flap: 1.25mm
- Suitable for tropical conditions
- Available in complete range from one way, two way, four way & five way type either with fuse carrier or MCB
- Available with Gland sizes BW 25 or BW 32, and 2/3 nylon cable glands with shrouds of best quality
- Fully meet IEC design criteria
- Tested and approved as per IP44

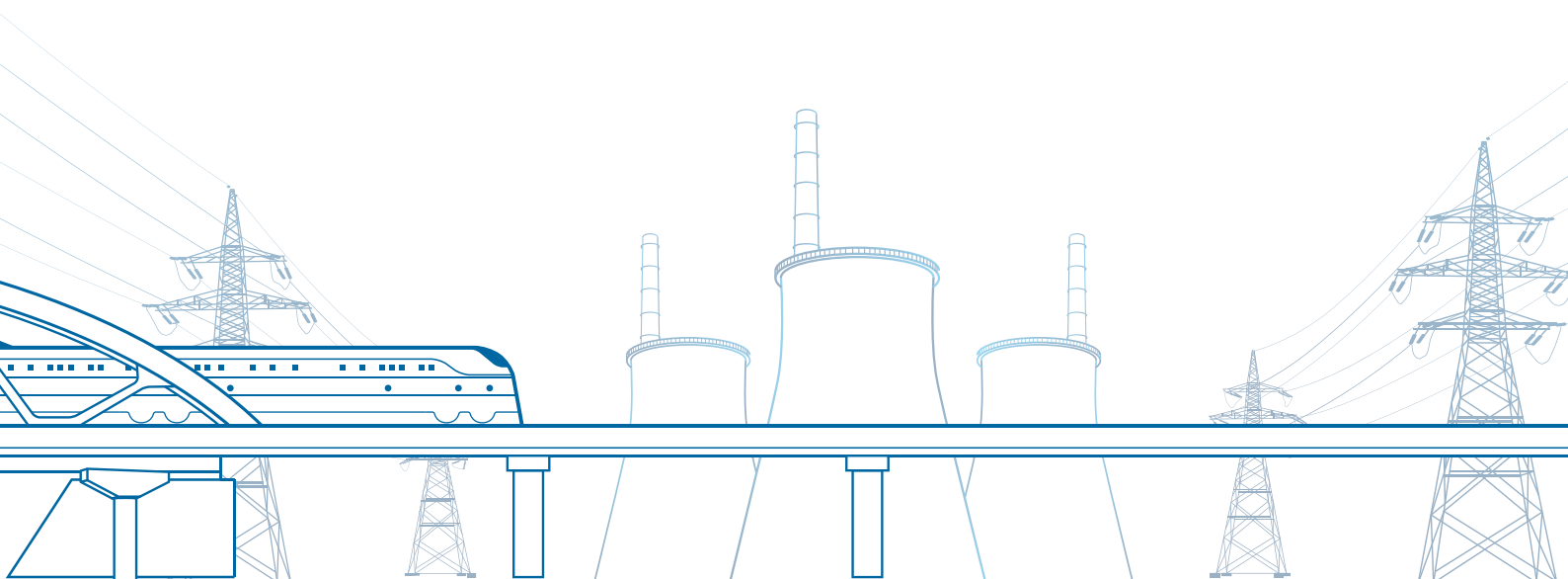


House Service Cutouts



- Made of fine quality Glass Re-inforced Polyester Moulding (DMC) or Bakelite material
- provides safety, strength, durability & excellent tracking resistance.
- Tin Plated phase terminals are used to ensure low contact resistance and prevent oxidation.
- Serrated single or double entry phase & neutral terminals are suitable for Al or Cu conductors up to 35mm².
- C.H head screws ensure effective & secure connection.
- Incoming phase terminal on the fuse base will be protected with Nylon Shield - Red Colour.
- Provision given for sealing the fuse carrier to the fuse base when fitted to protect from power theft.
- Double Notching provided in Copper Contacts to hold Phosphorus Bronze Leaf Spring intact during operation. Phosphorus Bronze Leaf Spring helps in retaining the original shape of fuse carrier contact under changing temperature conditions.
- All Current Carrying Parts are Non-Ferrous.

- Rating up to 100A
- Compliant with BS 1361
- Available in Single Pole, Single Pole Neutral and Triple Pole Neutral configuration
- Suitable for ZR (cylindrical) type fuse links as specified in BS 1361

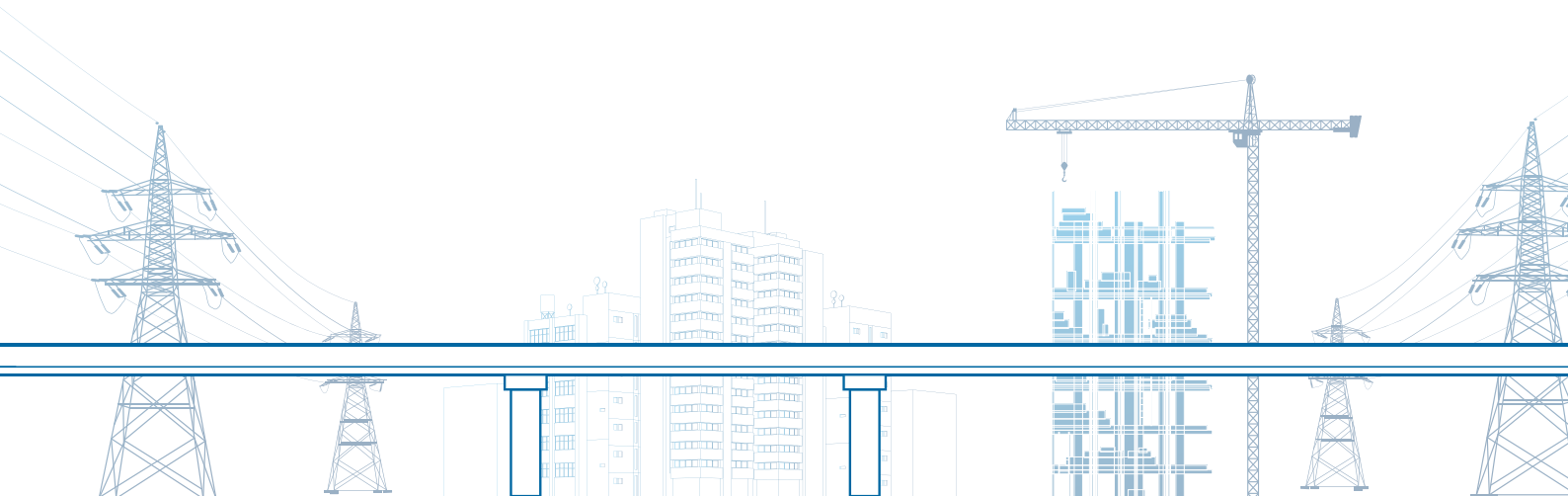


Pole Mounting Aerial Fuse Cutouts



Pole Mounted Aerial Fuse Cutouts are rated from 20A to 400A, fully meeting design criteria of BS88. These are made of high quality Glass Re-inforced Polyester Moulding (DMC), which gives them unobtrusive appearance and makes them vandal resistant. Cable terminal plates incorporate M12 captive studs with nuts and washers for the reception of cable sockets up to 300mm².

- Slide fit front cover for ease of joining.
- 'Easy fit' studs accept cable socket (lugs) up to 300mm².
- Designed to accept standard 'J' type fuselinks with 82mm fixing center.
- Fully meet design criteria of IP43.
- Fuse contacts and terminal plates made from copper and bright tin plating.
- Type tested at CPRI



Other Range Of Products



MCB



RCD



Accessories



Fixed MCCB



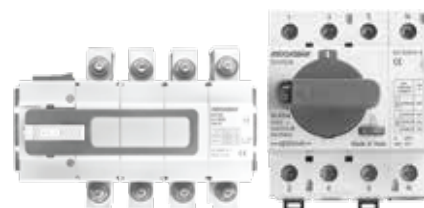
Adjustable MCCB



DB



Changeover



Optinova



SD & SDF



HRC Fuses



Analog/Digital
Time Switch



Vertical
Fuse System



Elvira ECP



Elvira Key Card



Glint Color Plate



Glint Wiring
Device



Shynora

[illegible]

[illegible]

[illegible]



Indoasian's network of channel partners and distributors spans 60 countries in Africa, Middle East, Far East, Asia Pacific, Europe and Oceania.



CORPORATE OFFICE:

V. J Business Tower, A-6, 1st Floor, Sector-125, Noida-201301, UP., India.
Ph.: +91-0120-3305100 | E-mail: internationaldindoasian.com | Website: www.indoasian.com